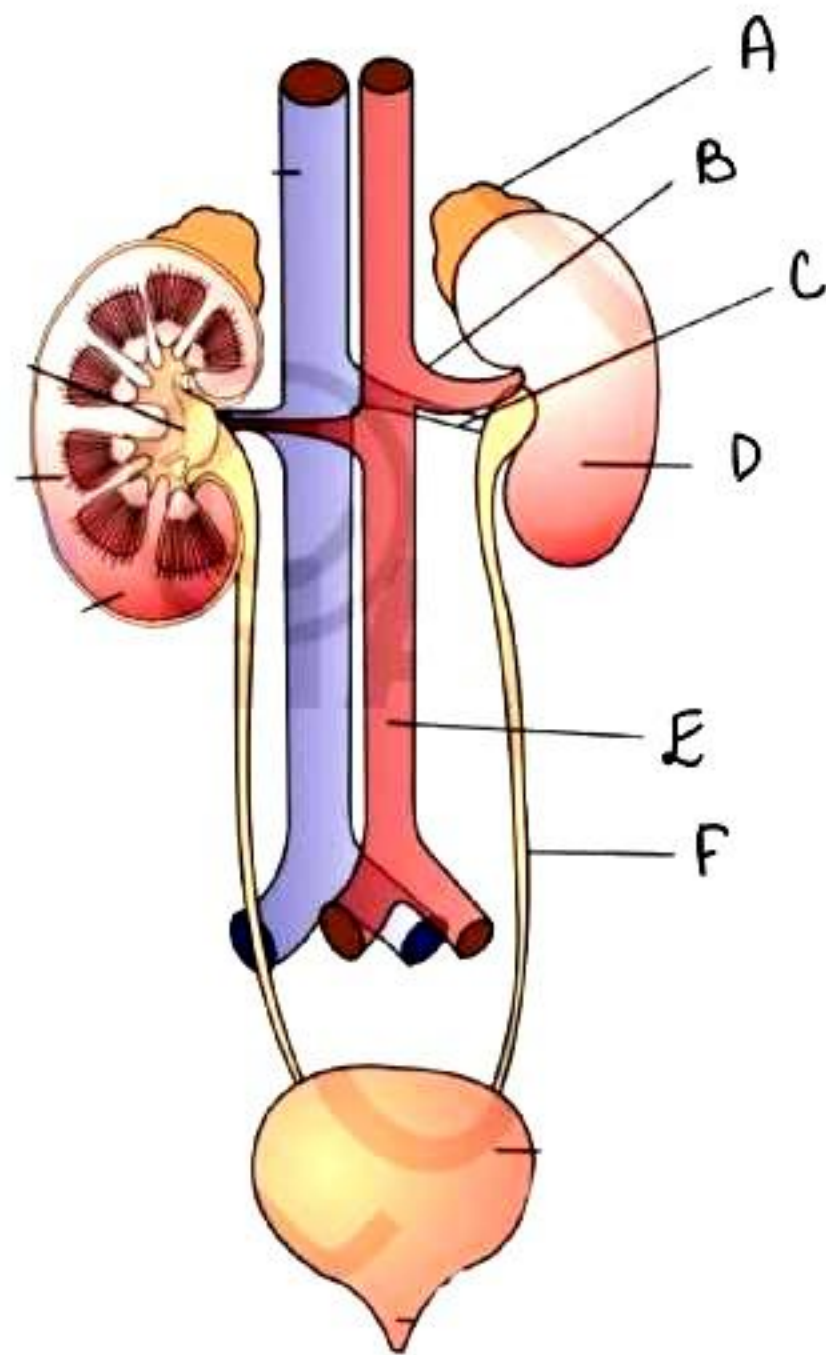


Excretory Products and their Elimination

Set – 1

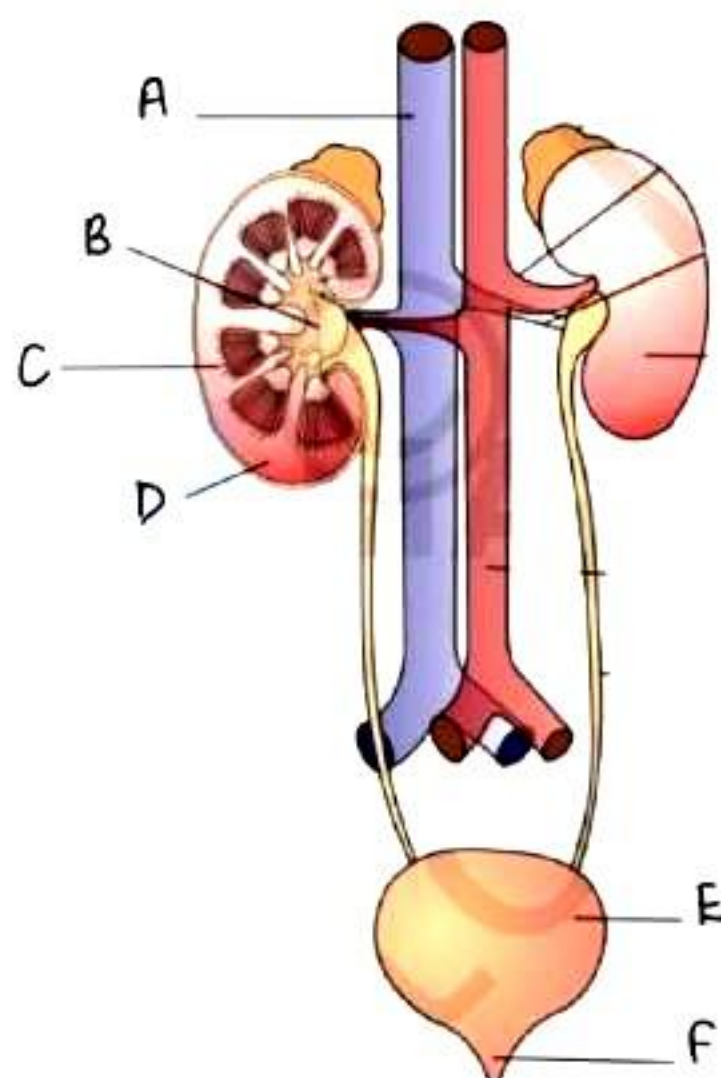
Q1. Select A, B, C, D, E, F respectively.



- A. Adrenal Gland, Renal Artery, Renal Vein, Kidney, Dorsal Aorta, Ureter
- B. Adrenal Gland, Renal Vein, Renal Artery, Kidney, Dorsal Aorta, Ureter
- C. Adrenal Gland, Renal Vein, Renal Artery, Kidney, Dorsal Aorta, Urethra
- D. Adrenal Gland, Renal Artery, Renal Vein, Kidney, Ventral Aorta, Ureter

Ans. (A)

Q2. Select A, B, C, D, E, F respectively.

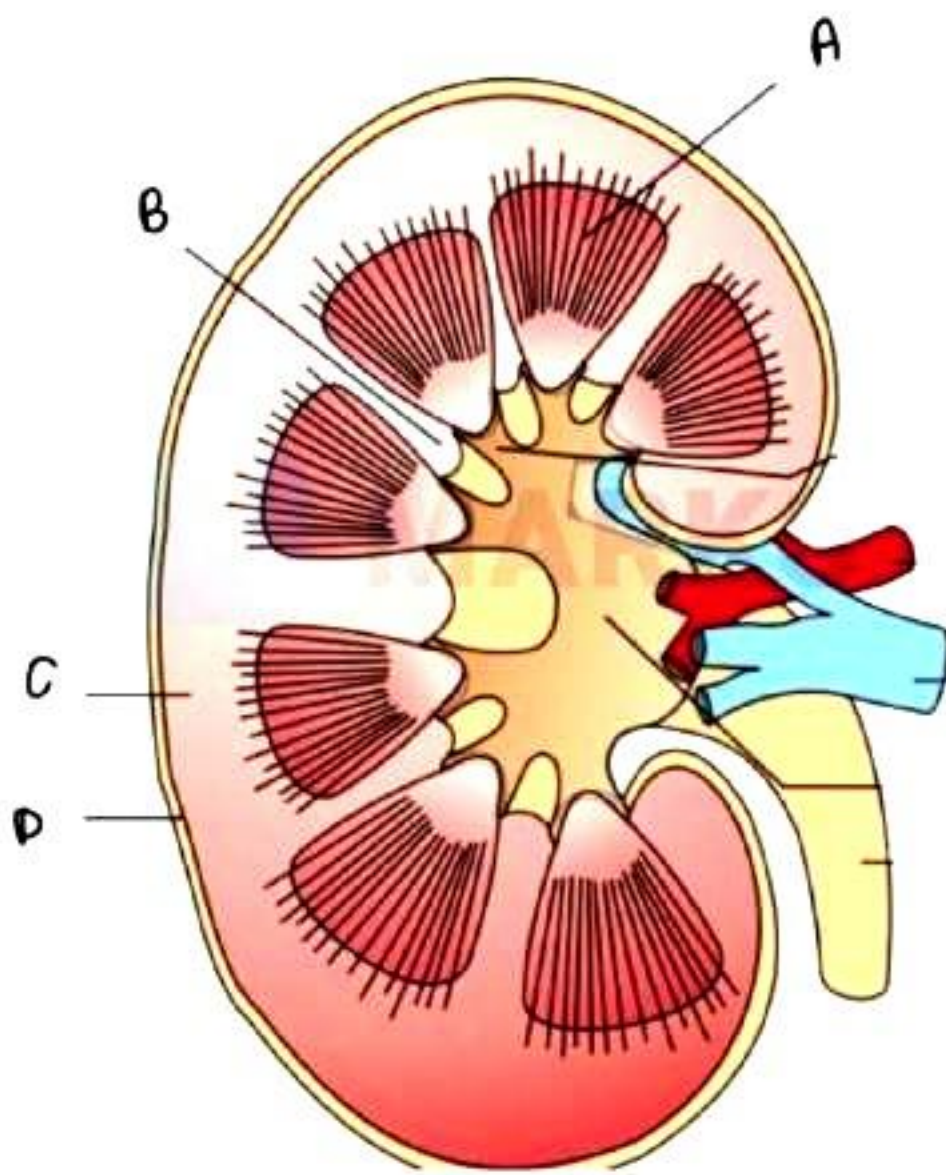


- A. Superior Vena Cava, Pelvis, Medulla, Cortex, Bladder, Ureter
- B. Inferior Vena Cava, Pelvis, Medulla, Cortex, Bladder, Ureter
- C. Superior Vena Cava, Pelvis, Medulla, Cortex, Bladder, Urethra
- D. Inferior Vena Cava, Pelvis, Cortex, Medulla, Bladder, Ureter

Ans. (B)

Set – 2

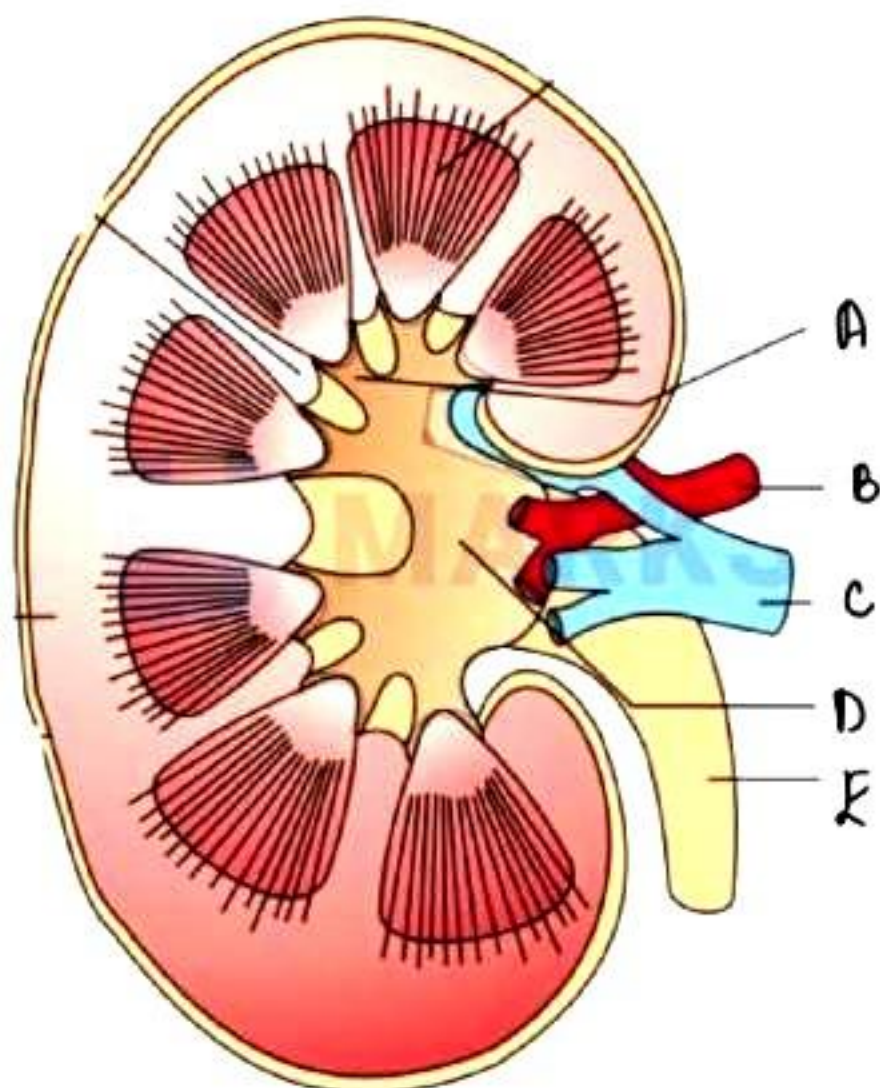
Q1. Select A, B, C, D respectively.



- A. Medullary rays, Renal Column, Medulla, Renal Capsule
- B. Medullary rays, Renal Column, Cortex, Renal Capsule
- C. Medullary Pyramid, Renal Column, Cortex, Renal Capsule
- D. Medullary Pyramid, Renal Column, Cortex, Renal Wall

Ans. (c)

Q2. Select A, B, C, D, E respectively.

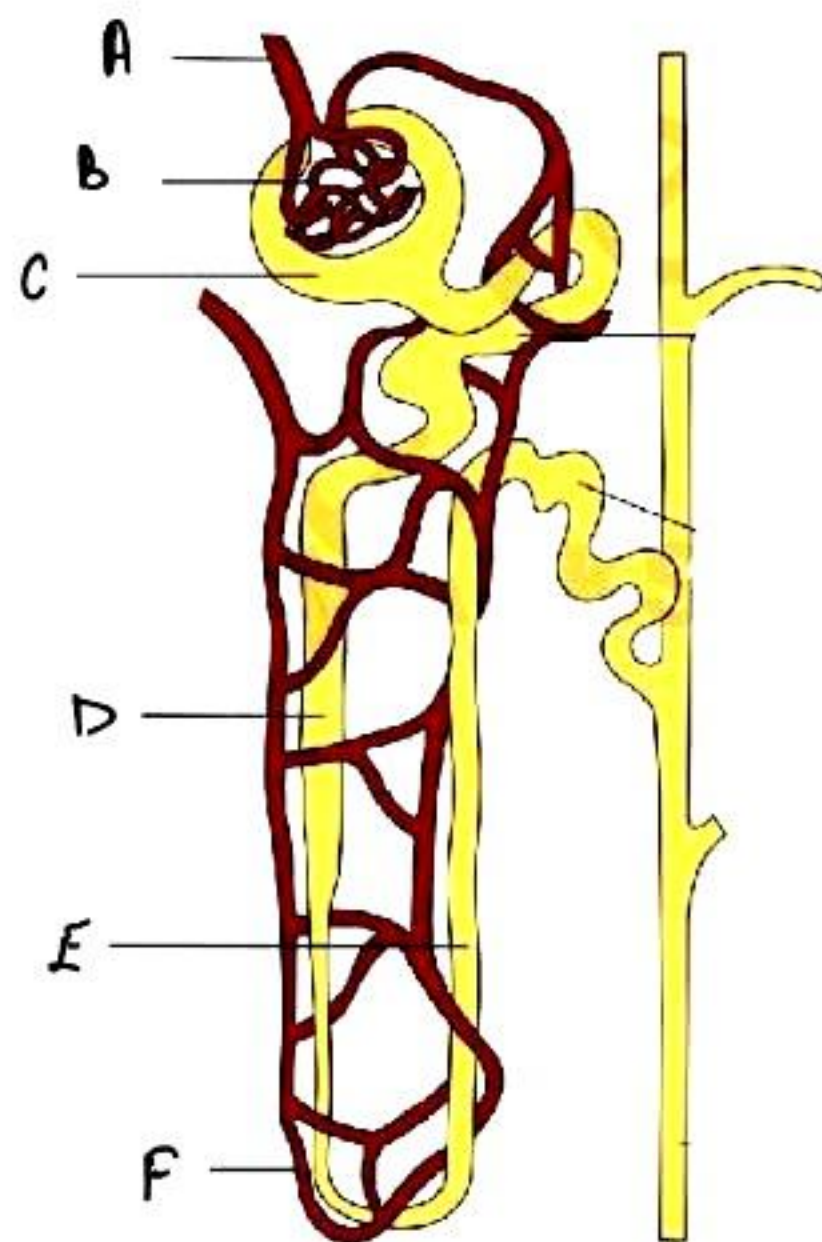


- A. Medullary Pyramid, Renal Vein, renal artery, Renal Pelvis, Ureter
- B. Calyx, Renal Vein, renal artery, Renal Pelvis, Ureter
- C. Calyx, Renal artery, Renal vein, Renal Pelvis, Ureter
- D. Medullary Pyramid, Renal Vein, renal artery, Renal Pelvis, Urethra

Ans. (C)

Set – 3

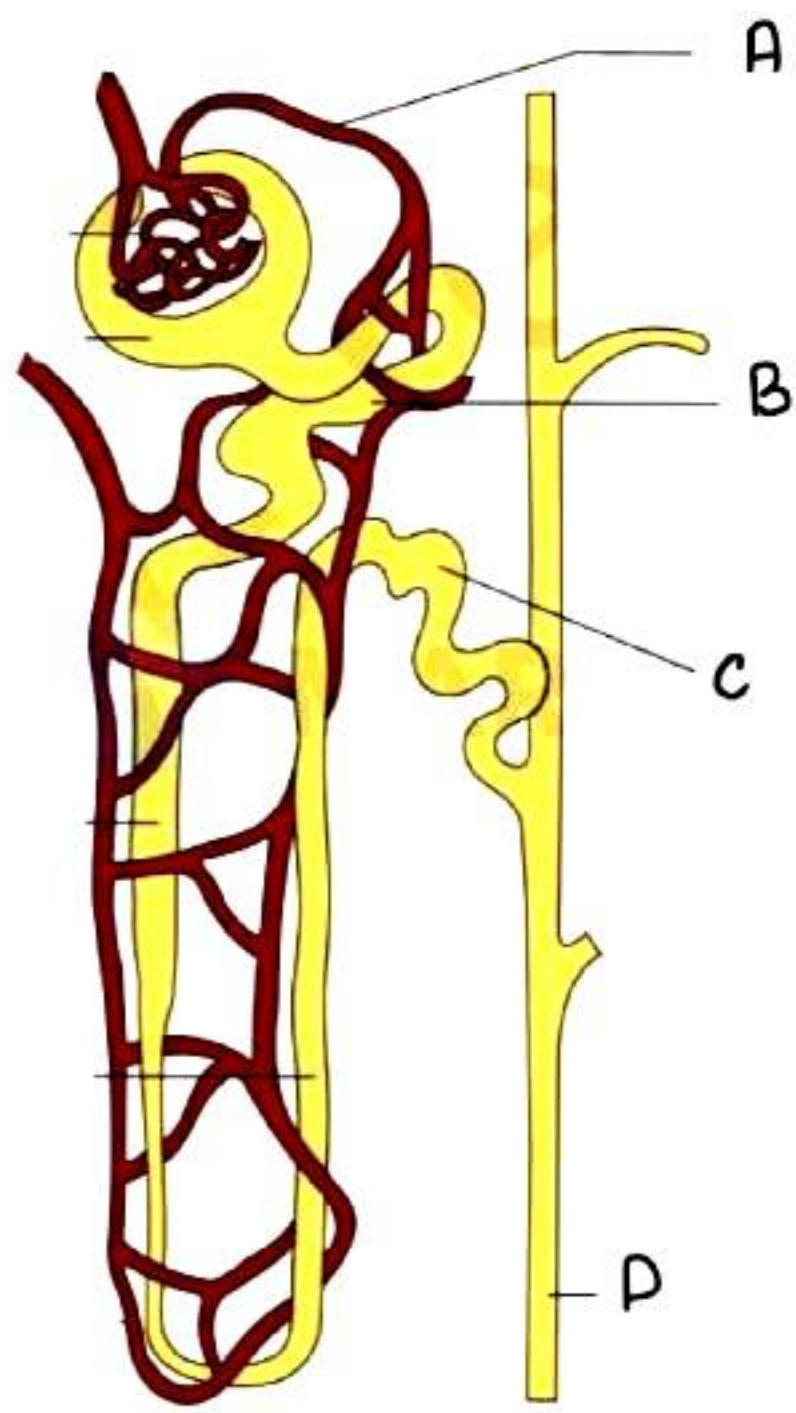
Q1. Select A, B, C, D, E, F respectively.



- A. Afferent arteriole, Bowman's capsule, Glomerulus, Descending loop, Ascending loop, Vasa Recta
- B. Vasa Recta, Bowman's capsule, Glomerulus, Descending loop, Ascending loop, Afferent arteriole
- C. Afferent arteriole, Glomerulus, Bowman's capsule, Descending loop, Ascending loop, Vasa Recta
- D. None of the above

Ans. (C)

Q2. Select A, B, C, D respectively.

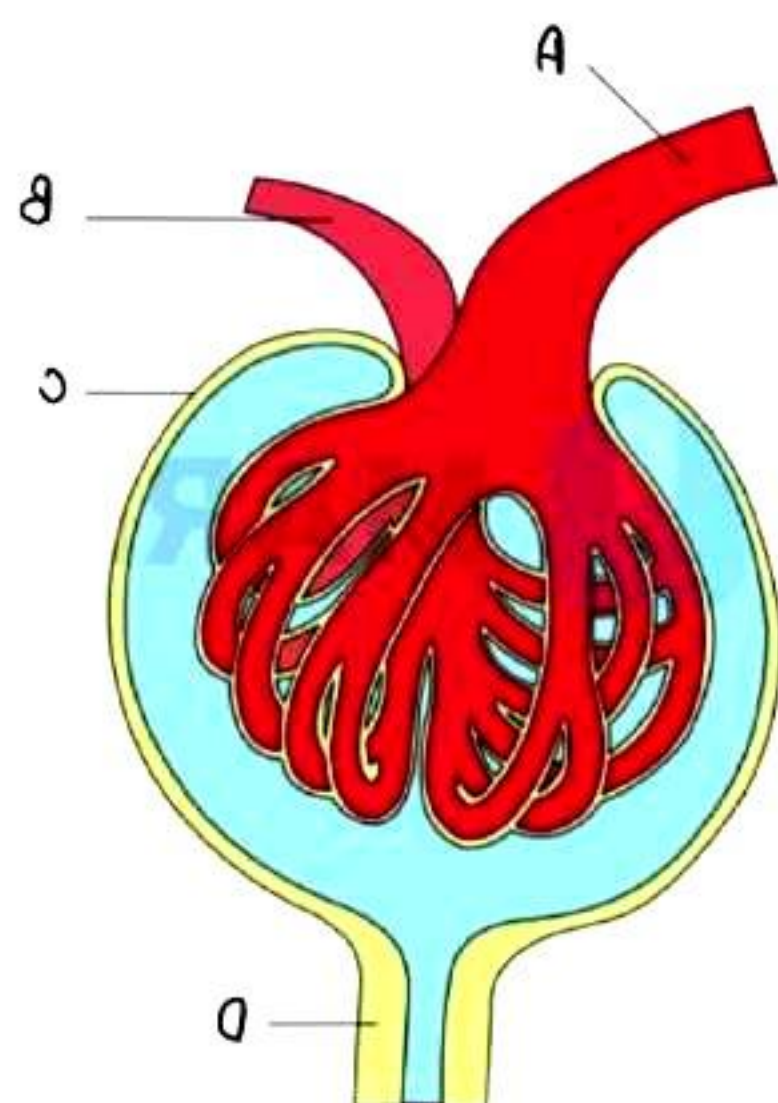


- A. Efferent arteriole, PCT, DCT, Vasa Recta
- B. Afferent arteriole, PCT, DCT, Vasa Recta
- C. Efferent arteriole, PCT, DCT, Collecting Duct
- D. Afferent arteriole, PCT, DCT, Collecting Duct

Ans. (C)

Set – 4

Q1. Select A, B, C, D respectively.

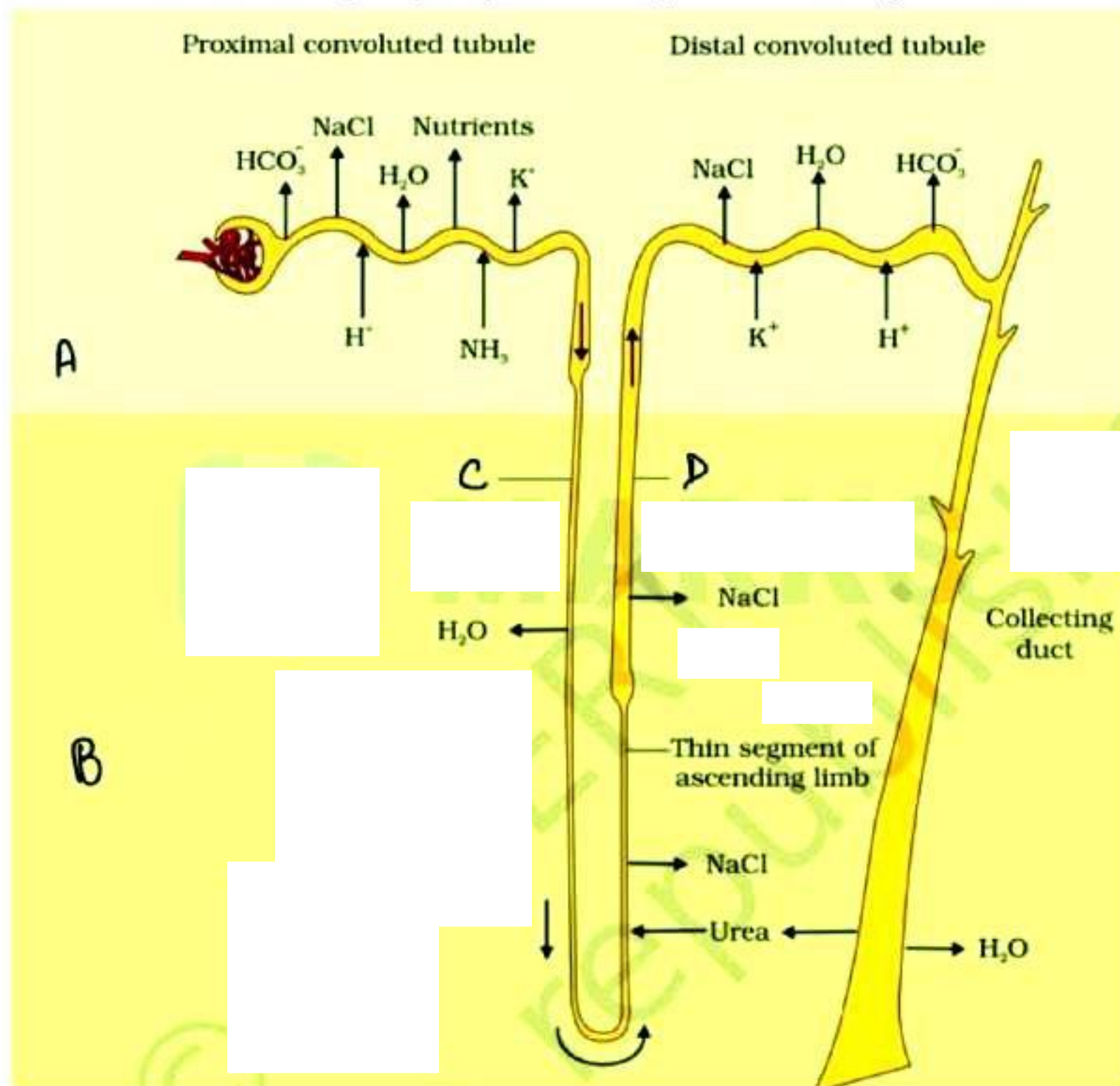


- A. efferent arteriole, afferent arteriole, Bowman's capsule, PCT
- B. afferent arteriole, efferent arteriole, Bowman's capsule, PCT
- C. efferent arteriole, afferent arteriole, Bowman's capsule, DCT
- D. afferent arteriole, efferent arteriole, Bowman's capsule, DCT

Ans. (B)

Set – 5

Q1. Select A, B, C, D respectively.

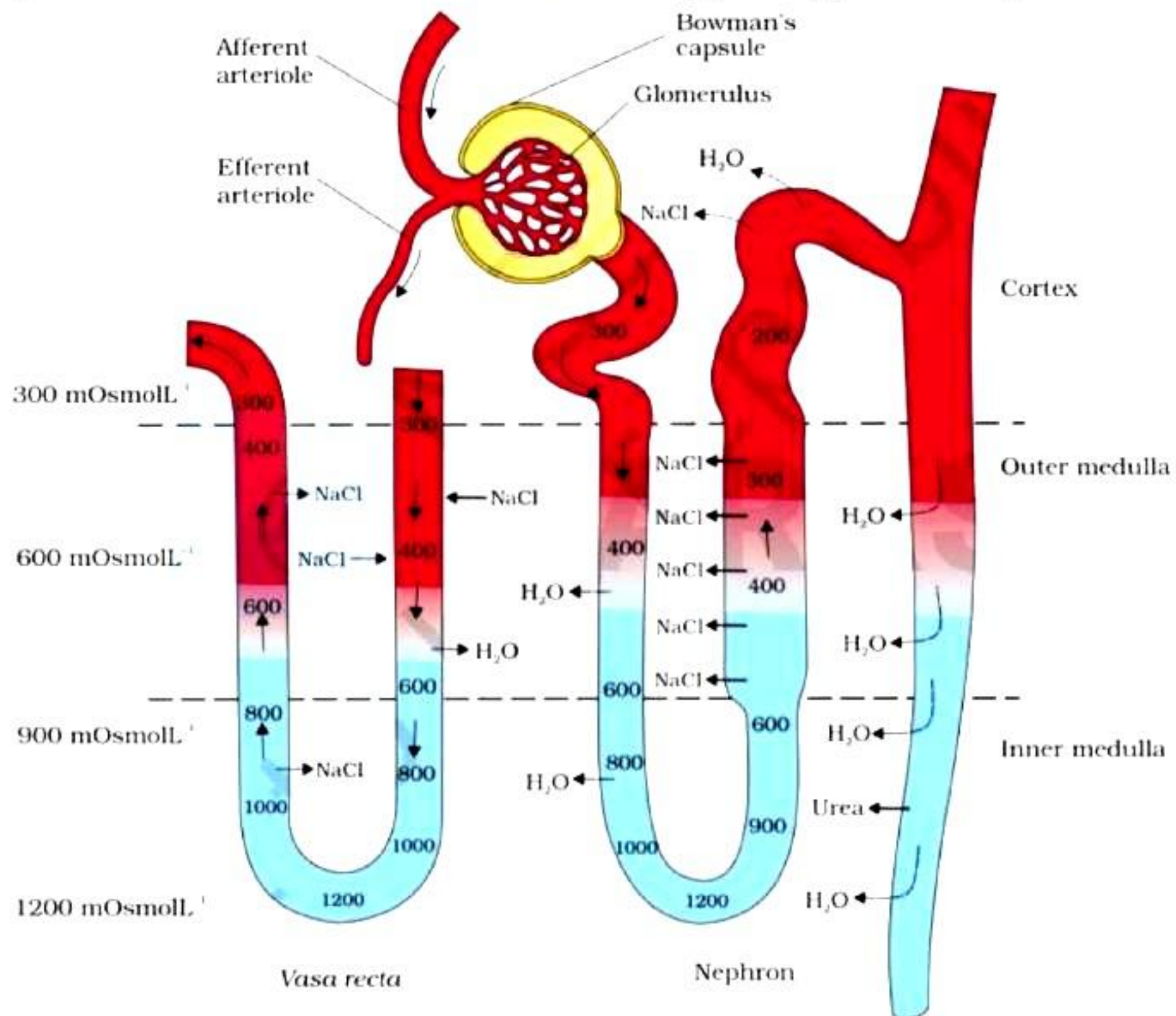


- A. Cortex, Medulla, Ascending loop, Descending Loop
- B. Cortex, Medulla, Descending Loop, Ascending loop
- C. Medulla, Cortex, Descending Loop, Ascending loop
- D. Medulla, Cortex, Ascending loop, Descending Loop

Ans. (B)

Set – 6

Q1. What does the following diagram represent?



Ans. (C)